

Errata for 2018 National Standard Plumbing Code–New Jersey 1st Printing

The following are changes that we found after the first printing of the *2018 National Standard Plumbing Code-New Jersey*. We do encourage you to make a note in your code book to ensure that the changes are reflected. Thank you.

SECTION: 2.12 Sleeves for Piping

Paragraph a.) should read as follows:

- a. A piping passing through concrete walls, floor, slabs, and masonry walls shall be provided with sleeves for protection. EXCEPTION: Sleeves shall not be required for pipes passing through drilled or bored holes. Such holes shall provide ~~1-1/2~~ 1/2 inch minimum clearance around the pipe and any thermal insulation.

SECTION: 6.2.10.b Interceptor Sizing

Change “Appendix K” to “Appendix I.”

6.2.10 Interceptor Sizing

- b. Gravity interceptors for commercial kitchens shall be sized based on the inlet pipe flowing half-full according to Appendix ~~K~~ I, a 30-minute retention time, and an additional 25% storage factor for floatable FOG and settled solids, or as required by the Adopting Agency.

SECTION: 9.3.4 Standpipes

Figure 9.3.4 Standpipe Receptors

Delete "(single family dwellings only)" after Laundry Sink and Clothes Washer Drain

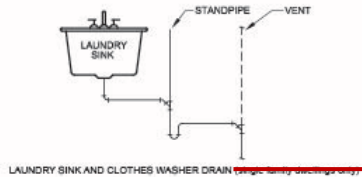


TABLE 10.19: Sizing of Residential Water Softeners

Correct the number of bathroom groups served to the following:

Required Size of Softener Connection (in.)	Number of Bathroom Groups Served ¹
3/4	Up to 22 2 ²
1	Up to 43 4 ³

TABLE 11.4.1: Drainage Fixture Unit (DFU) Values

Correct the following:

INDIVIDUAL FIXTURES

Floor Drain, ~~Standby~~ Auxiliary

Shower (multiple 2.5 gpm showerheads) refer to section 11.5.7 &

SECTION: 11.4.4.e Floor Drains

Change “Standby” to “Auxiliary” in two instances.

e. ~~Standby~~ Auxiliary floor drains, as defined in Section 1.2, shall be have no drainage fixture unit load (0.0 DFU). All downstream drain piping shall be not less than the pipe size of the ~~standby~~ auxiliary floor drain.

SECTION: 11.11.2.c Locations of Suds Pressure Zones

Change “pipe diameters” to “feet.”

11.11.2 Locations of Suds Pressure Zones

c. Zone 3 - in the horizontal drain beyond the base of a sanitary drain stack. A suds pressure zone shall extend 10 pipe diameters from the base of the stack. Also, if a turn greater than 45 degrees occurs in the horizontal drain less than 50 ~~pipe diameters~~ feet from the base of the stack, suds pressure zones shall exist 40 pipe diameters upstream and 10 pipe diameters downstream from the horizontal turn.

SECTION: 12.10.2 Individual Water Closets

Figure 12.10.2 was removed, edit the figure reference sentence as noted below:

See ~~Figures 12.10.2 and~~ 1.2.77

SECTION: 12.10.3 Bathroom Groups

Based on the revised text, Figures 12.10.3-A through F were removed. Delete the following figure reference sentence:

~~Refer to Figures 12.10.3 A through F~~

APPENDIX M to APPENDIX K

Change the following four references from Appendix M to Appendix K.

- Section 10.14.3.a
- Section B.5.4
- Table B.5.4 Note (4)
- Data for Figures B.8.1: Water Service Pipe Sizing Table